

St Mary's Grapevine

BI-MONTHLY NEWSLETTER | ST MARY'S ANGLICAN CHURCH SUNBURY
OCTOBER 2016

WELCOME TO THE OCTOBER ISSUE OF THE GRAPEVINE

Grab yourself a cuppa- we cover quite a range of topics inside the October issue of "The Grapevine".

Our feature article is from the Building Committee, written by Noel Sprague and updates us on the latest plans and drawings for our new worship centre. Following the feedback received from the Parish at the consultation sessions in June, the Building Committee have been working closely with the Architects to modify the plans and the external appearance. The Building Committee look forward to meeting with the Parish at an information session in the Parish House on Sunday October 23rd to further outline the revised plans and drawings which are detailed in this edition of Grapevine.

Our 150th Anniversary of our existing historic bluestone church will be celebrated in November 2017 and plans are

beginning for how we will celebrate this occasion. Read Annette's article on page 10 to find out how you can submit your plans!

Remember the fantastic weekend last year where we hosted Refugees from Dandenong? We've invited them to visit us again on October 30th and the program for the day is on page 9.

No doubt by now you've all met Rev. Keil Maslen, but the question is- "how well do you know Keil?" Nicole Templeton sat down with Keil before he started at St Mary's to get to know him better! Read her interview on page 2.

As always, if you have any articles you would like to see featured in the Grapevine please send us an email: admin@stmarysanglican.org.au

DATES FOR YOUR DIARY

- | | |
|------------|---|
| 18 Oct- | Riddell Gardens Service |
| 19 Oct- | Mothers Union |
| 19 Oct- | "Girls Night In" Fashion Parade |
| 19-22 Oct- | Synod |
| 20 Oct- | Sing & Soup |
| 23 Oct- | Buildings Update
Information Session |
| 27 Oct- | Lions Hostel Service |
| 28 Oct- | Friday Friendship Lunch |
| 30 Oct- | Refugees Visit to Sunbury |
| 5 Nov- | Games Night |
| 7 Nov- | Gavin returns |
| 7 Nov- | Parish Council Meeting |
| 8 Nov- | Parish Prayer Meeting |
| 13 Nov- | Service Leaders Meetings |
| 14-15 Nov- | Staff Planning Retreat |
| 16 Nov- | Mothers Union |
| 17 Nov- | Diocesan Building Committee |
| 17 Nov- | Sing & Soup |
| 21 Nov- | Annual General Meeting |
| 22 Nov- | Riddell Gardens Service |
| 24 Nov- | Lions Hostel Service |
| 25 Nov- | Friday Friendship Lunch |
| 28 Nov- | Quiet Christmas at Tobins |
| 3 Dec- | Games Night |
| 10 Dec- | Christmas on the Green |
| 12 Dec- | Parish Council Meeting |

Former Army Chaplain now St Mary's Locum minister refreshed by the community

By Nicola Templeton

If you haven't met Keil Maslen yet, you can be sure you soon will. Describing himself as 'pretty extroverted', Keil was for a number of years an Australian Army Chaplain. His job took him all over Australia to Darwin, Sydney and then Townsville. He also served overseas in Afghanistan. He loved being an Army Chaplain and felt privileged to be part of speaking to men and women about their spiritual needs and through this, pointing them to Christ.

Now living in Sunbury with his wife Cath Fisher and newborn son Joshua, Keil has joined the ministry team at St Mary's as Assistant Locum Minister and says the warmth and welcome they have received from the church community has been a delight.

'It is what we need to flourish as individuals, as a couple and parents,' he says.

Community life is a big part of Sunbury's heart. Reading Ian Symonds history of the Bulla Bulla region, Keil has recently discovered that George Evans of Evans Street married at 58 years of age going on to father six children.

Reflecting on the move to Sunbury, community had an important place in his life with Cath in Townsville.

'We made many great friends there and miss them lots. Cath and I worshipped with an Anglican Community called Ross River Anglican Church.'

Taking inspiration from his father who was always ready to help others in his community using his skills and training, Keil says it was this and others like him that have inspired him.

Did this sense of community contribute to his decision to join the Army?

'The military world has it's own language and culture which can appear very strange and alien to an outsider but these really are only superficialities. It is inhabited by people who share the same hopes, dreams, expectations, frustrations and failings of any of us.'



Keil and Cath with their son Joshua and cat Randall

As a Chaplain I met people who were in many ways similar to those I meet in parish life. The only difference', Keil says, 'is in the military everyone wears the same clothes!'

Were there experiences in Army Chaplaincy that Keil draws on in community ministry today?

'It's a great privilege to share with someone questioning life, it's meaning and then to point them to Jesus. I love having these conversations and look forward to having many such chats here in Sunbury.'

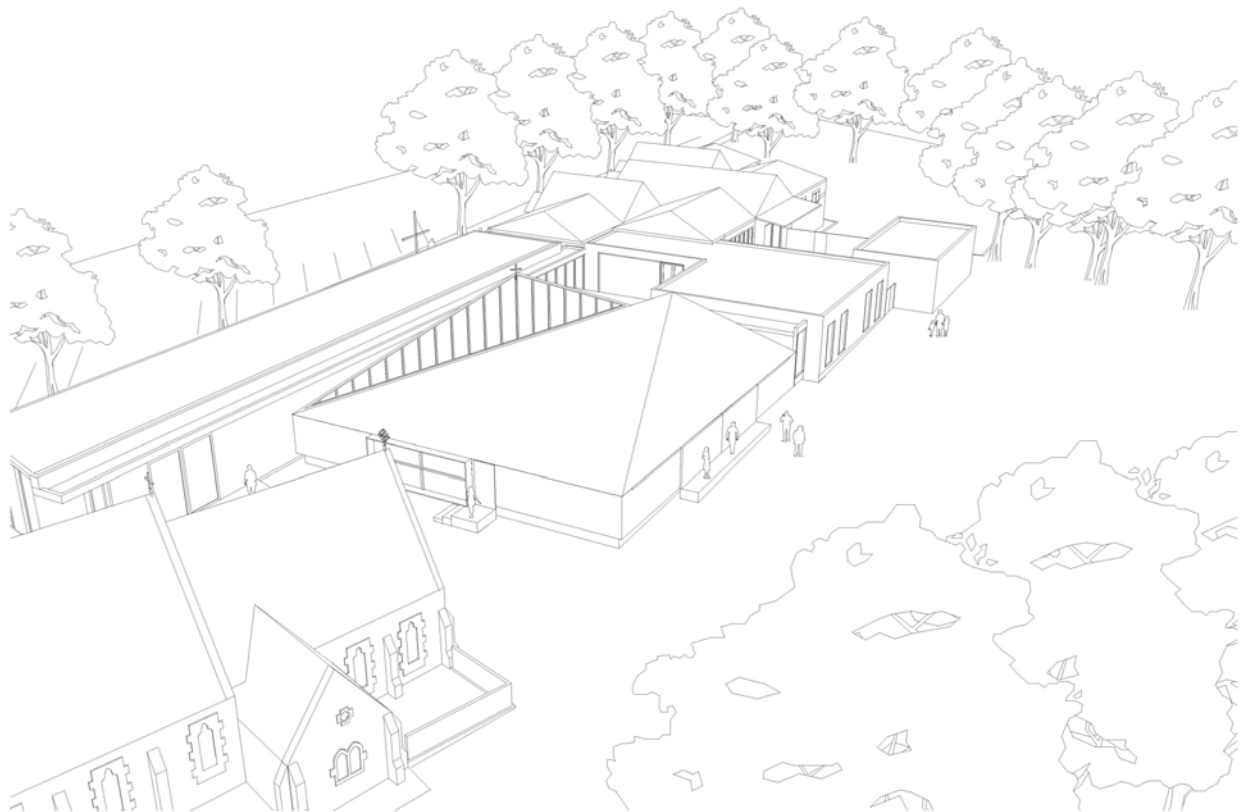
What of the challenges faced in the Army, how did you approach living in community in these circumstances?

'Individuality is difficult in the military. Learning how to survive as a Christian in a sometimes, hostile environment was a great 'life-lesson'. It developed my resilience as a Christian. The life and freedom I experience as a disciple of Christ has meant that my relationship with God is of primary importance.'

When he is not working, where might you find him?

'If I'm not enjoying time with Cath, I will be tinkering in the shed, building a new piece of furniture, or planning a renovation. I enjoy recreating and am refreshed by this and interaction with other people.'

Keil officiates at the Wednesday service and will assist Kim with the 8.30 and 10.30am services at St Mary's, Sunbury while Gavin is on long service leave.



scheme 3
view from above looking north
St. Mary's Anglican Church, Sunbury September 2016

atelier
wagner
ARCHITECTS
101 Bank Street, North Fitzroy
3068 Victoria Australia
Telephone +61 3 9422 2116
info@atelierwagner.com.au

BUILDING FEEDBACK

The building committee extend their thanks to all who have taken the time to attend one of the three information sessions on the new worship centre. We also thank those who continue to uphold the building process in daily prayer. Please continue to pray as we now begin the approval and permit process, prior to engaging building contractors. We were extremely encouraged by the passion and enthusiasm displayed by the congregations and although some feedback was conflicting we have gone with a majority view of opinions expressed. Your feedback has been crucial in shaping variations to the proposed architects design. Sixty eight people provided comments, all of which can be found on our website under "Downloads" then "Building project".

Of all the comments received the top nine concerns are listed below:

1. Exterior Roof line /shape of worship centre
2. Natural light / windows to worship centre

3. Areas for youth activities
4. Toilet for café
5. Match new exterior to old bluestone building
6. Kitchen access and size
7. Use and size of café
8. Area for home group meetings
9. Cross on worship centre

Whilst it is impossible to incorporate all suggestions, some would be unachievable and we need to ensure we design a building we can finance, your concerns have been heard and the architect has redesigned the functionality of the building to incorporate much of your feedback. This has substantially increased the building cost from the initial plan.

The plans now include and identify a change to the exterior shape and roofline, with addition of more natural light into the worship centre, both by side and roof glazing.

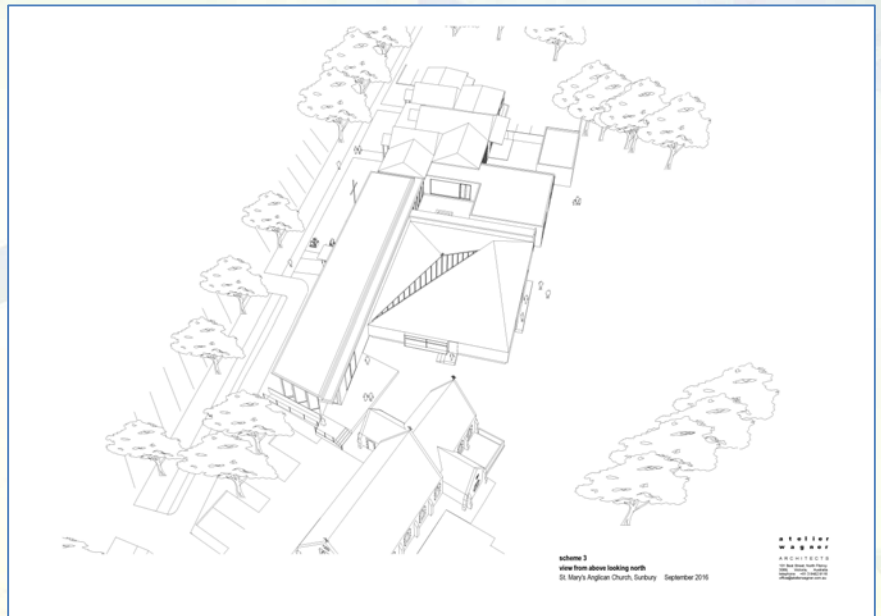
The roof allows glimpses of, and links views to the existing church with the new worship centre.

It also allows us to place a cross on its peak. The exterior cladding of our new buildings will be in equitone cladding which will be bluestone in colour to match the existing church and the current proposal is for a shingle roofing product which mirrors the existing church slate roof. This will mean that the building will blend into the surrounds.

A dedicated area, lounge, for youth activities has been allocated, as well as very much larger divisible children's areas with views and access onto the Village Green.

There will also be two halls which can be opened up with the children's area via movable walls, providing either a large space or smaller meeting areas. All of these divisible areas are planned to be larger than our existing hall. The toilet facilities have now been relocated next to the café and there is an increase in the size of the new kitchen. The position of the toilet facilities has been altered to be closer to the foyer, and the meeting room layout altered to provide greater flexibility.

There is now a planned tea/ coffee station/ service point in the entrance foyer. The architect has also revisited the new entry to the office facilities, maintaining the existing hall entry hopefully also addressing privacy issues that were raised. The old hall entry has been removed and extended to form additional office spaces whilst maintaining the original historic exterior walls and form. Design change has been a little difficult due to the gentle slope over the entire site in particular the planned courtyard area adjacent to the planned children's area. This has meant we may need to lower the existing kitchen floor to match the new additions. This will only occur once we have some of the new buildings in place and operational to minimise any impact on hospitality.



One possible contentious issue was the proposal to provide a link between the old church building and the new facilities. Some parishioners were not in favour of partly obscuring the bluestone church, others wanted a covered link to the side chapel and the new facilities. The building committee explored various options involving rotating the café or parts of the new centre, extending further into the Village Green area, but settled on the original concept design across O'Shannassy street without the link, this slightly obscures the side chapel from street view. The architect has increased internal room sizes and as such the entire building now extends slightly further into open space on our land. The open areas between the new and existing churches will be fenced to reduce through access and it is hoped vandalism as well as provided another secure play area for children to use.



If in the future we still feel strongly about the requirement for a link, this can be added without major redesign or alterations to existing building works. The decision to remove several aged mature trees was not taken lightly. The arborist report has identified that these trees are drought affected and have an estimated life of less than 10 years, the request to remove will also mean that we replant similar trees elsewhere on our property. We will also be in a position to increase the number of trees on our land between the worship centre and existing church.

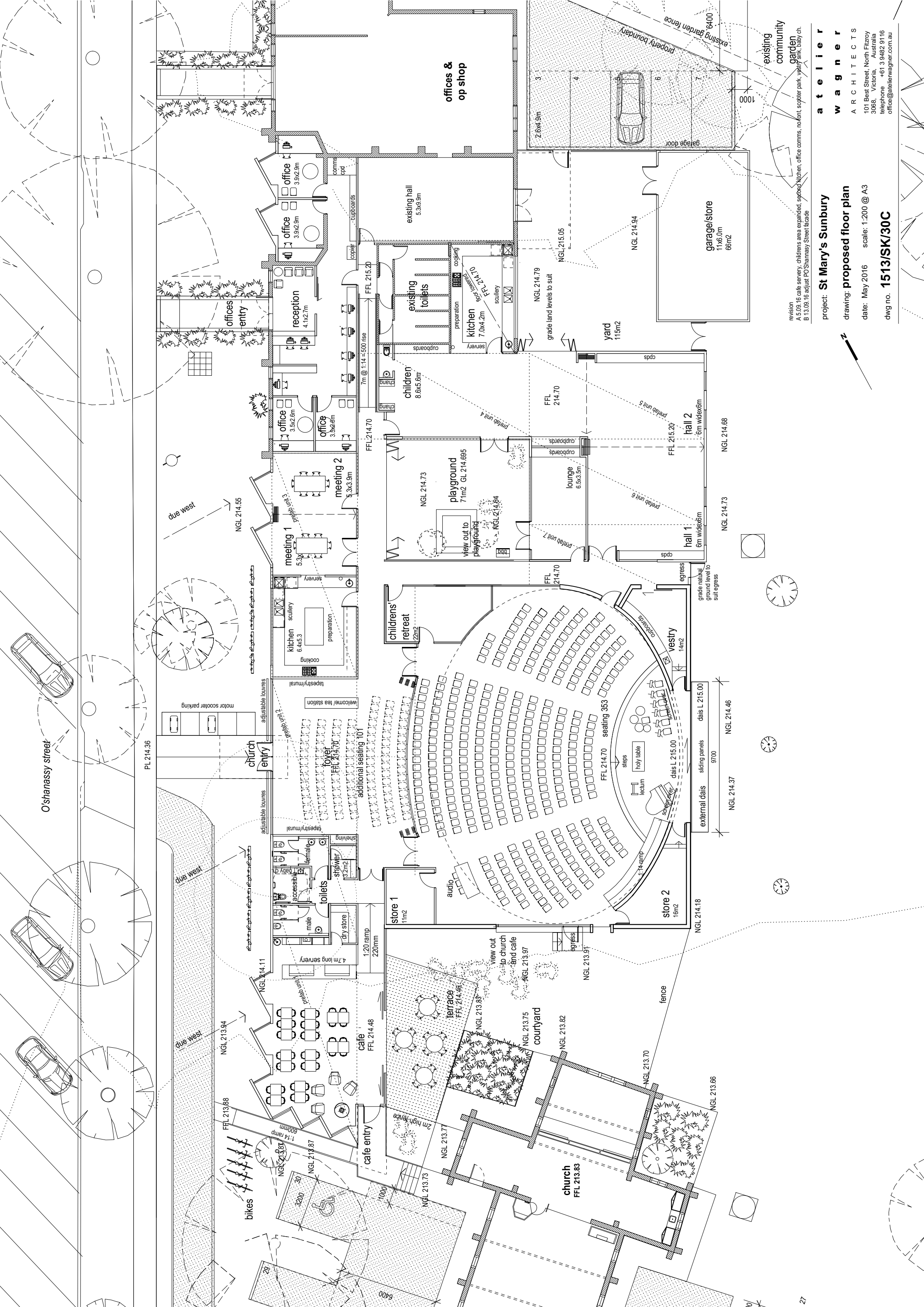
ENGAGING OUR LOCAL COMMUNITY

There has already been informal discussion with the president of the Sunbury Historical Society in regards to concerns around the initial concept building designs and any future plans to link the historic building. They are not in favour of a link and thought the planned changes to the exterior and roof from the concept designs complimented our existing buildings. This process will require further consultation with our local community.

THE WAY FORWARD

The new design as included has been presented to the Parish Council for review and comment, the process of obtaining Diocese Building Committee approval will occur on 17 November.

There will be another parish information session on Sunday 23 October at 12 noon in the Parish House.



revision
A 5.09.16 cafe servery, childrens area expanded, second kitchen, office comms, no front scooter park, vestry sink, baby ch.
B 13.09.16 adjust PO Shannassy Street facade

project: **St Mary's Sunbury**

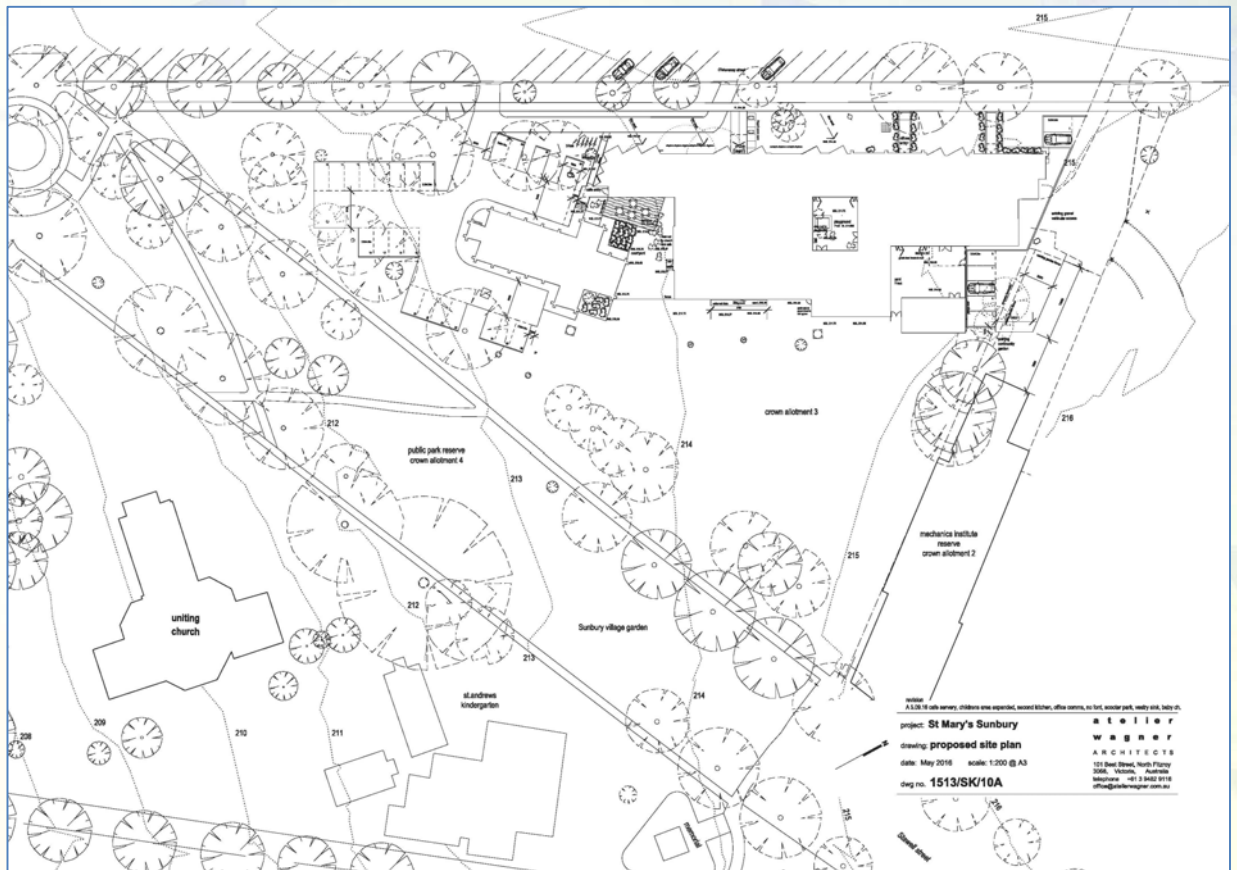
drawing: **proposed floor plan**

date: May 2016 scale: 1:200 @ A3

dwg no. **1513/SK/30C**

a t e l i e r
w a g n e r
A R C H I T E C T S
101 Best Street, North Fitzroy
3068, Victoria, Australia
telephone +61 3 9482 9116
office@atelierwagner.com.au

"Please continue to uphold our building plans in your daily prayer."



We would anticipate that the Diocese may seek some minor design changes, these will be well circulated and discussed openly prior to any planning application. Once we have an approved finalised plan we anticipate advertising a public meeting to engage and advise the wider Sunbury community. A preplanning application is proposed to be submitted for comment and feedback to Hume Council. This process enables us to identify and hopefully allay any major concerns expressed by the council. Parking as indicated at the information sessions is highly likely to be one of these.

PARKING

In order to be prepared for the planning approval stage we have engaged Cardno traffic consultants to review and address a traffic management strategy for the site. Traffic surveys on site, both weekday and weekend, have been undertaken by Cardno and these will assist with planning for parking requirements on site. We will review their comments and provide this report to the Hume council with any planning application. They have advised a minimum 30 parking sites will need to be establish on our land. It is hoped that a dispensation may be provided by council to maintain green parking rather than asphalt to preserve current visual aspects of the village green.

There is much work ahead of us and as we seek planning and building approvals, we also must address funding requirements from the ADF. We will, once we have a final design, request a quantity surveyor provide a final cost. This will determine how we then proceed with funding.

PRAYER SUPPORT

As we approach these major milestones, especially the planning approval from Hume, we will seek a special call to prayer from all parishioners, to meet and pray specifically for approval of God's plans for St Mary's. I cannot overstate the importance we as a church place on prayer and as this is a once in a lifetime event, parishioner prayer support will be needed as a foundation for future parishioners and to ensure that we can share God's word with all. Please continue to uphold our building plans in your daily prayer.

In the area of finance. Can I ask that if you have any spare funds sitting in bank accounts probably not receiving interest, that you consider a deposit in the ADF which currently pays 1.5% on deposits/on call and up to 2.0% for term deposits. If you nominate St Mary's this then assists the parish in obtaining any future loan to finance the build, you retain any interest earned on your deposit and it is available on call or at the end of the nominated term.



Refugee Visit

Sunday October 30th 2016

Connect with our Refugee friends again
Have a BBQ lunch on Sunday following the 10.30am service
(our guests will arrive on a train at 11.30am) and play some games on the Village Green
Visit "Organ Pipes" National Park and enjoy a bush walk
Attend 5pm church together and share an evening meal

How YOU can be involved.....

Come along.....
Invite your friends.....
Complete a "Driver Application" form
to assist with transport.....
Add your name to the sign up sheet to assist
with catering, setting up etc.....
Pray....

*At the end of this month our refugee friends from Dandenong will be returning to Sunbury for a special day.
Here is what we have planned:*

10:30am - Hear a story

We have invited Afshin Tahouri to tell his story at the 10:30am service.

11:30am - Arrival by train

Most of our guests will be travelling from Dandenong and are due to arrive in Sunbury at 11:30am.
A small group will meet them at the station and walk to the village green.

11:45am/12pm - Halal BBQ on the Green

Following church, we will meet on the Village Green for a BBQ lunch and fun festivities
(such as Botche, soccer, drumming etc.)

1:30/2pm - Trip to Organ Pipes National Park

We will drive together for a scenic walk at our nearest national park.

4:30pm - tea and coffee at St Andrew's

Tea, coffee and refreshments will be offered before the service.

5pm - Service and Dinner (at St Andrew's)

During the service here will be an opportunity to hear the story of one of our guests.
The service will be followed by dinner in the hall, after which we will say farewell to our guests.

Please find a sign up sheet in the hall, in which people can sign up to help with different aspects of the day. We are looking for people to be appointed as hosts for the day for our guests, (to see they are given a warm welcome). We are also requesting help with meals, transport, activities, and assistance with set up/pack up of meals. For more information, please contact Kim Beales.

150 Years of St. Mary's Church in Sunbury

By Annette Swaffield

On November 24th 1867, the church building of St. Mary's was opened for public worship.

As we approach this date next year, it will be 150 years of continuous worship in this magnificent building.

This naturally leads to a reason to celebrate this wonderful milestone and for this reason, a start has been made to collect ideas from the people of St. Mary's as to how they would like to see us celebrate our 150th anniversary.

Visits have been made to groups and discussions have been held with individuals for ideas and suggestions of celebrating. We would also like to provide an opportunity for people who haven't been approached through either of these methods to also put forward any ideas.

An initial plan is for the celebration to be held for just over a week, encompassing the weekend before and the weekend after the official date with the celebrations culminating on Sunday November 26th with a visit by Archbishop Frier.

We would love to hear your ideas. Please forward them to me via admin@stmarysanglican.org.au and these can be forwarded on to myself or Gavin.

Looking forward to gathering your ideas into a wonderful week of celebrating God's presence and action in our community.

Children's Outreach Worker

St Mary's Sunbury is looking for a children's worker.

10 hours per week.

Commencing in 2017.

For more information, please

contact Rev. Kim Beales

03 9744 1347

kimdbeales@gmail.com



www.stmarysanglican.org.au



Christmas on the Green

The message of Christ to the community of Sunbury.

Saturday 10th of December
from 5 till 8.30 pm.

This event is organised by
the Combined Churches of Sunbury.

There will be a Nativity stable with real animals, bands, choirs and local primary school students on stage, clowns, face painting and free activities for the children, followed by the Christmas Carols. Food and drinks will be for sale.

Call for volunteers from all the churches. This can be for short shifts of one hour or the whole event.

We need help:

- for the setting up and taking down of the stalls,
- for the selling of food, drinks and candles,
- a go-for to help the people on stage,
- for the collection and the handing out of programs,
- for assistance with the children's activities,
- for emptying rubbish bins, keeping the grounds tidy
- and for the supervision of toilets.

Please think about where you can help to make this a great event for Sunbury.

For more information contact Wilmy on 9740 9448.

"Sleep Rough for those doing it Tough"

On Saturday October 1st the 5pm Community held an event to raise funds and awareness for those in our local community who are doing it tough.

As most of Victoria celebrated the historic Bulldog's Grandfinal win on Saturday October 1st, 2016, there were 247 men and women in Melbourne's CBD that were setting up makeshift beds in doorways, under bridges, in stairwells and under cardboard boxes. These are the known homeless, the people that can be counted, a shocking 74% increase on the last head count two years ago. But the figures don't take into account those in "housing distress", sleeping in cars or staying with friends.

It was statistics like this, the homeless man who sometimes joins the 5pm dinner after the service, and the increase in referrals to Careworks for people looking for assistance that prompted one of the members of the 5pm community to organise a sleepout to raise awareness and funds for Careworks.

Below: Benjamin, Steve and Matt keep a watching brief on the fire.

Right: Emily and Benjamin slept the roughest!



The event saw 20 people gather at the Parish house. We joined with the monthly games night, gathered around an open fire and roasted marshmallows, toasted starburst (a new experience for all of us!), and warmed our bellies with delicious hot soup from the soup kitchen before retiring to our various definitions of "sleeping rough".



Moving the clocks forward an hour for the beginning of daylight savings meant one hour less sleep (or one hours less discomfort) for the 14 who stayed the night and those who were rostered for Morning Tea for the 8.30am service were greeted by the team finishing off their breakfast before they headed home for the luxury of their showers and quite possibly their beds for a few more hours of comfortable sleep. Rumour has it that there may have been a minister seen greeting people at the 8.30am service in his dressing gown and pyjamas! We're not sure if that what is meant by wearing "Robes" !!

With the funds raised on the night, and donations from parishioners following the event \$500 will be donated to CareWorks in Sunbury which can be used to support those in housing distress in our local area.

2017 Sermons

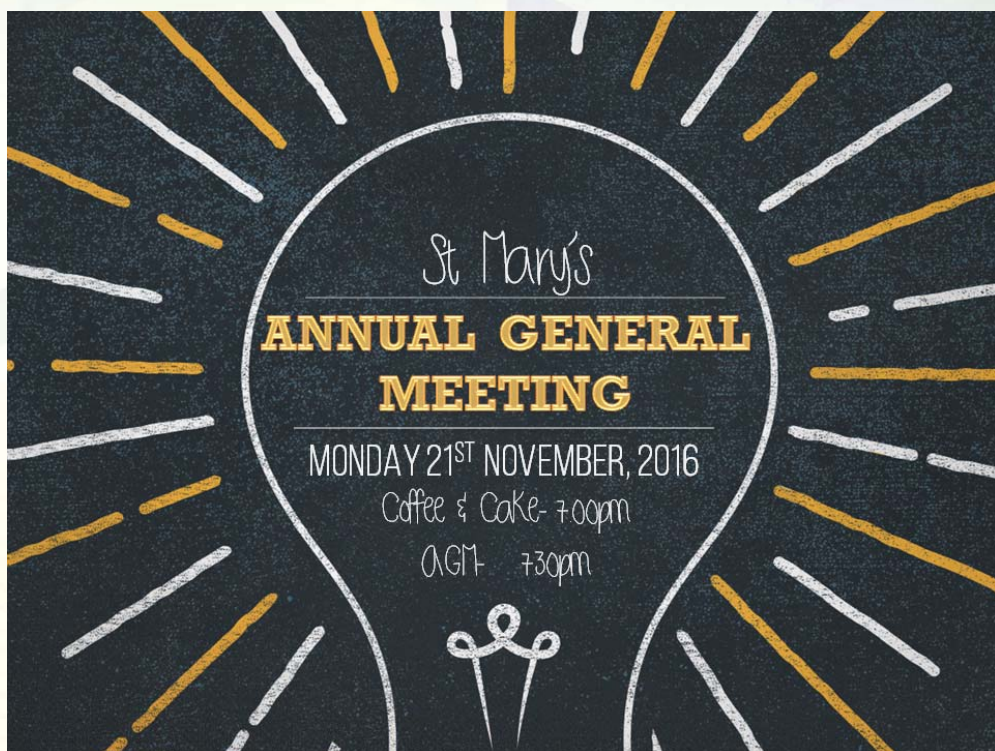
Got a great idea for a Sermon Series? Is there a book of the bible you would love us to unpack?

On November 14th and 15th the staff team are having a retreat to spend time away together praying, reflecting on the past year and planning for the coming year.

Part of the process will be to put together our preaching planner for the entire year and we always seek the input of the parish, asking at Service Leaders meetings, Home Group leaders meetings and Parish Council meetings for ideas.

If there is any feedback you would like us to consider as part of our review, any sermon series you particularly enjoyed and would like more of, guest preachers you would like to hear from or sermon topics you would like covered please send us an email or fill out a communication card by Sunday November 6th, so that all ideas can be collated:-

admin@stmarysanglican.org.au



Parish Directory Update

The 2016-17 Parish Directory will be issued at the AGM in November. Details will be the same as the listings in the current directory unless you advise me of any changes required by Monday November 7th.

Changes must be advised in writing, via communication card or email. If you are not currently in the directory and would like to be included please let Narelle know.

Contact St Mary's

PO Box 2049 Sunbury VIC 3429

p: 03 9744 1347

admin@stmarysanglican.org.au

www.stmarysanglican.org.au

www.facebook.com/St-Marys-Anglican

www.facebook.com/5pmcommunity

St Mary's Community Store- 9740 5547